

Halton FLU – Floor grille

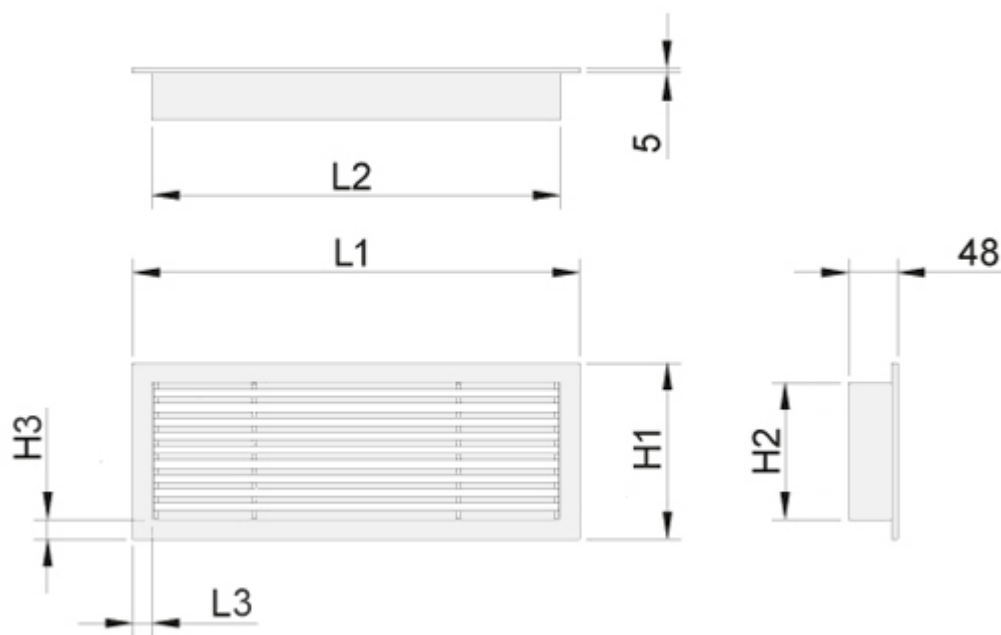
Overview

- Vertical supply from floor, suitable also for exhaust
- Fixed front vanes, stable throw pattern, no deflection from the jet centerline
- Strong aluminium construction, class K3 according the standard NF-EN 1253-2
- Detachable grille allows cleaning of the grille and ductwork
- Continuous grilles available with modular design

Product models and accessories

- Model with removable core vanes
- Airflow adjustment damper
- Installation frame

Dimensions



Flat frame, 18 mm (S=A)

LxH	L1	L2	L3	H1	H2	H3
300×100	312	276	18	112	76	18
600×100	612	576	18	112	76	18
1000×100	1012	976	18	112	76	18
300×150	312	276	18	162	126	18
400×150	412	376	18	162	126	18
600×150	612	576	18	162	126	18
800×150	812	776	18	162	126	18
1000×150	1012	976	18	162	126	18
1000×200	1012	976	18	212	176	18

Rounded frame, 25 mm (S=B)

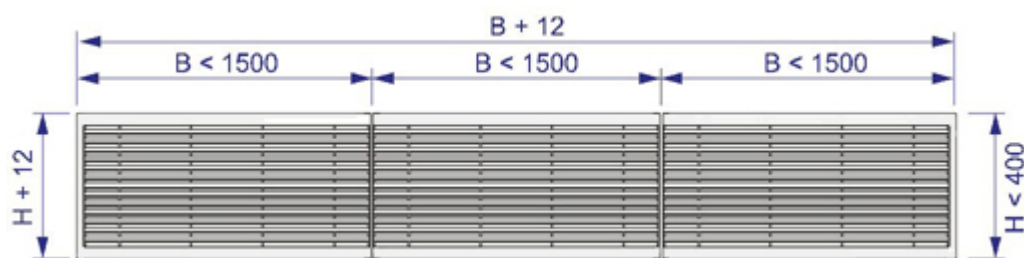
LxH	L1	L2	L3	H1	H2	H3
300×100	326	276	25	126	76	25
600×100	626	576	25	126	76	25
1000×100	1026	976	25	126	76	25
300×150	326	276	25	176	126	25
400×150	426	376	25	176	126	25
600×150	626	576	25	176	126	25
800×150	826	776	25	176	126	25
1000×150	1026	976	25	176	126	25
1000×200	1026	976	25	226	176	25

With flow control damper OD total depth = 48 mm + 45 mm.

Special dimensions

In addition to standard sizes, other sizes can be specially ordered. The maximum size is 1500×300 mm (LxH).

It is possible to have a continuous grille of modular design when the installation length is greater than 1500 mm. The maximum total length is 20 m.



Material

Part	Material	Finishing
Frame	Aluminium	Anodised or Mill finished
Vanes	Aluminium	Anodised or Mill finished
Installation frame	Galvanised steel	–

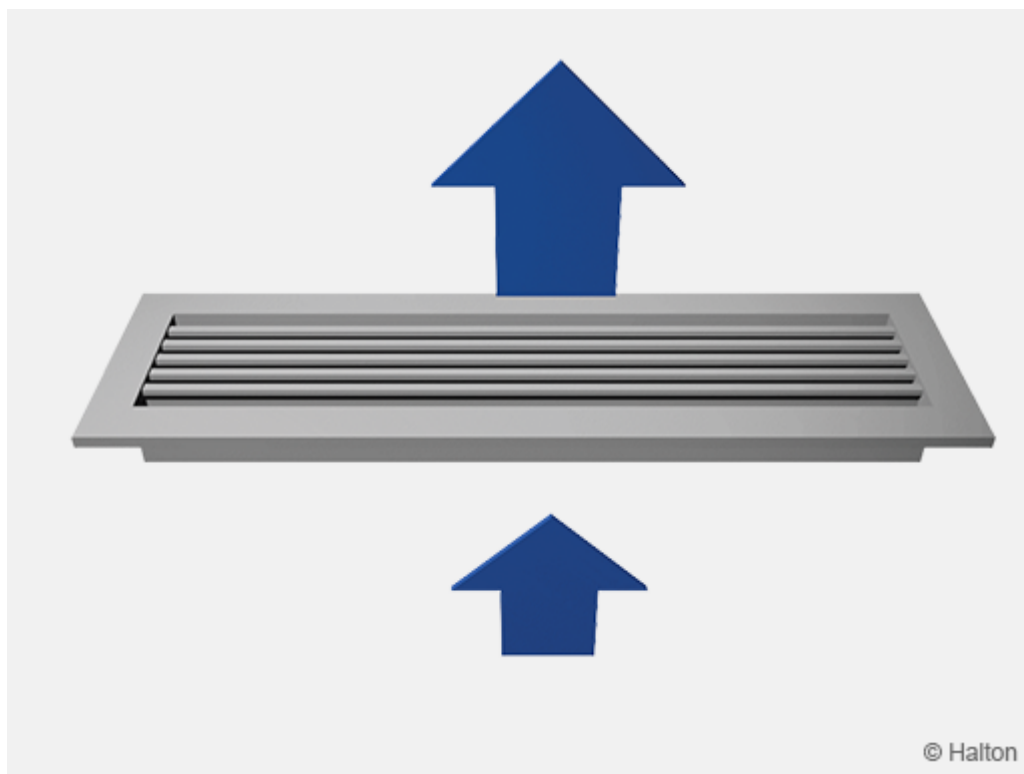
The bevel angles of the outer frame have been welded so that the joints are almost invisible.

Accessories

Product model	Code	Description
Model with removable core vanes	AV	Vanes can be removed to allow access to plenum

Accessory	Code	Description
Flow adjustment damper	OD	Aluminium opposite blade damper for airflow adjustment
Installation frame	IF	For the installation of the grille
Concealed screw fastening	CC	For installation with IF frame
Visible screw fastening	SF	Screw fastening with 25 mm wide frame
Flat installation frame	A	18 mm wide – 48 mm high frame
Rounded installation frame	B	25 mm wide – 48 mm high frame

Function



Supply air is supplied without deflection through the horizontal vanes into the space. Supply air mixes with room air in front of the grille.

The Halton FLU grille can also be used as an exhaust unit.

The Halton FLU grille has a high load resistance, with a class K3 according the standard NF-EN 1253-2, (test report CSTB n°CAPE AT 16-009).

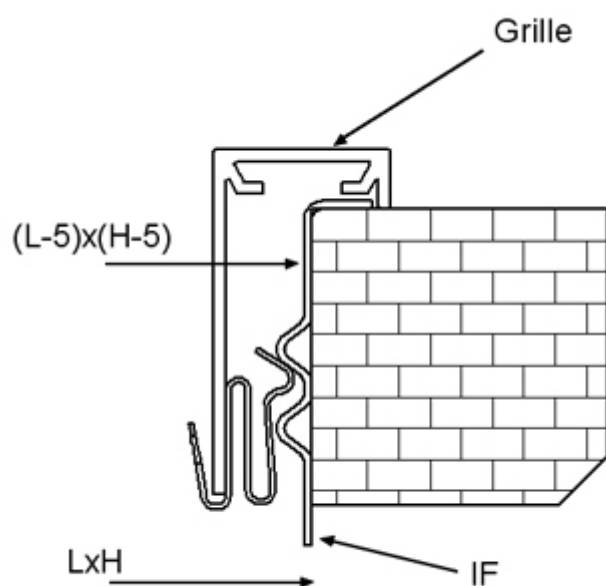
The class K3 is defined in the standard as: *"Area without at the vehicle traffic, like common place, shopping centers, and some public buildings"*

Installation



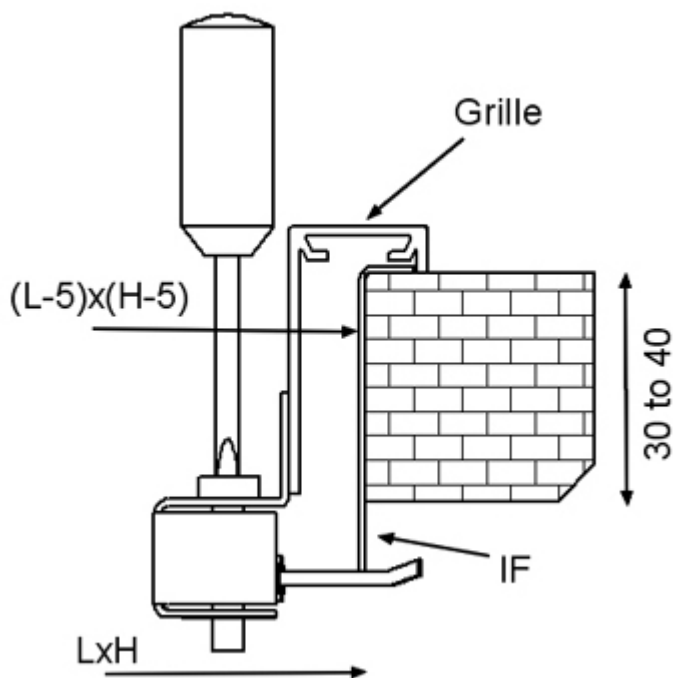
The grille is connected to the floor plenum using the IF installation frame. (1).

Clips fastening (standard)



The grilles are supplied with clips fastening as standard with the IF installation frame.

Concealed screw fastening (option)



Concealed screw fastening is possible when the grille is installed with an installation frame (IF).

Visible screw fastening (option)

Visible screw fastening is possible with the 25 mm wide frame. The auto screws, 4.2x25 (bevel headed screw) are supplied.

The size of the installation hole is $L \times H$ when an installation frame is used, and $(L-5) \times (H-5)$ without an installation frame.

Adjustment

Airflow adjustment damper OD

The airflow rate is adjusted by turning the damper blades behind the grille with a screwdriver. The measurement is carried out when the grille is installed.

Servicing

The grille can be removed for cleaning.

Remove from the floor, by gently pulling the grille from the outer frame. Use a screwdriver, if necessary.

Clean the components with a damp cloth. They must not be immersed in water.

Push the grille back into place, so that the springs lock.

Specification

The floor grille has horizontal fixed vanes without deflection, and an 18 mm wide flat or 25 mm rounded frame, with an anodised standard finishing.

The floor grille can be used for both supply or exhaust air.

The bevel angles of the outer frame is welded so that the joints are almost invisible.

The floor grille is mechanically strong in order to bear external loads.

The floor grill is detachable in order to provide access to the duct.

Order code

FLU/S-L-H; FS-FI-ZT

S = Frame option

A Frame 18 x 45

B Frame 25 x 45

L = Length (mm)

200, +1, ..., 20000

H = Height (mm)

100, +1, ..., 300

Other options and accessories

FS = Fastening

CL Clips

CC Concealed screw fastening

SF Screw fastening

FI = Finishing

AN Anodised

MF Mill finished

ZT = Tailored product

N No

Y Yes (ETO)

Sub products

BDR	Plenum
PRL	Plenum
IF	Installation frame (Grilles)
OD	Opposed blade damper (Grilles)

Code example

FLU/A-200-100, FS=CL, FI=AN, ZT=N